

## **Installation Modifications Required To Install KNS AK Precision Rear Sight Using The Sabrewerks KOP System**

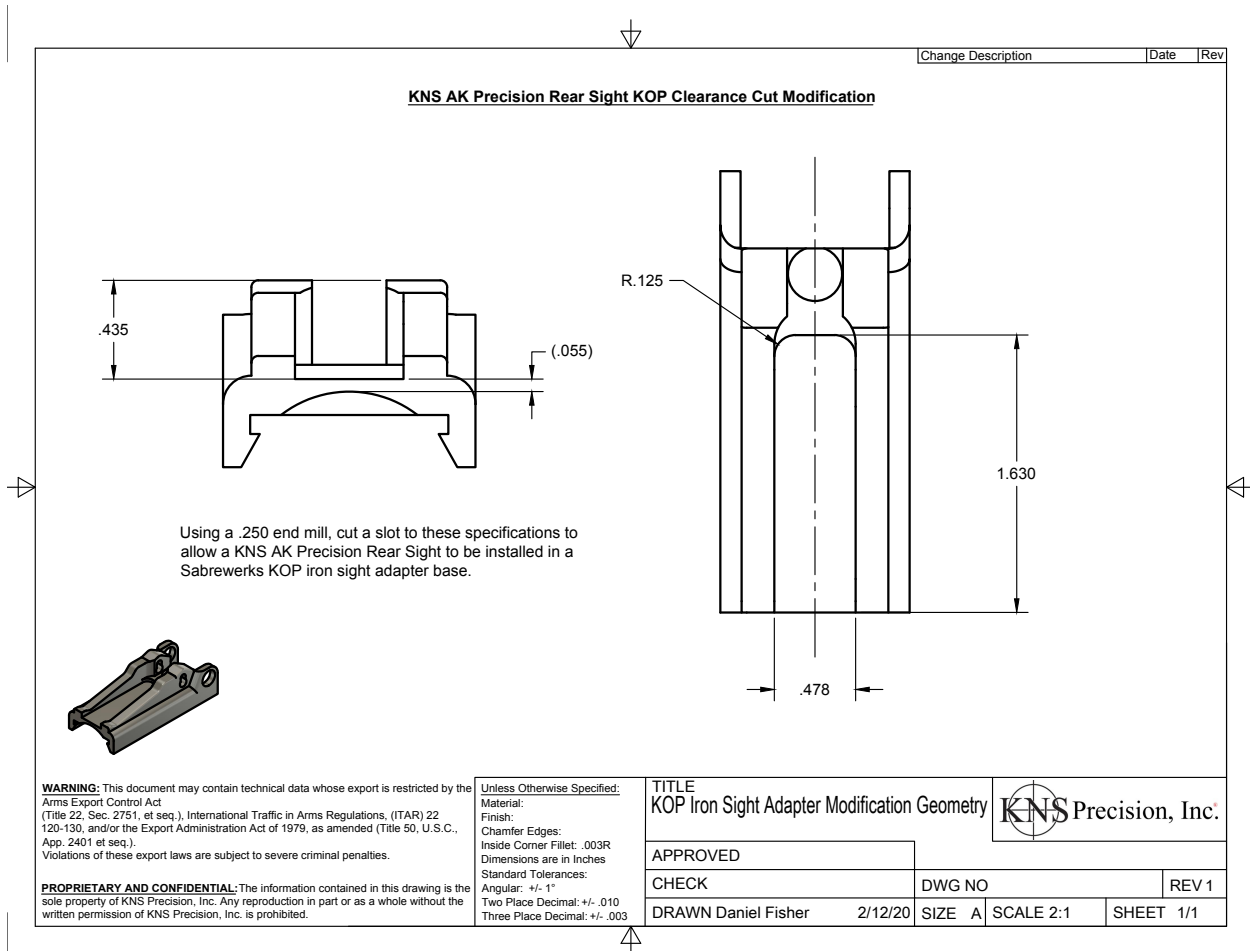
Due to the way the Sabrewerks KOP iron sight adapter is manufactured, The KNS AK precision rear sight cannot be installed without a simple modification. This is due to the KOP mount not having the casting void present in standard AK rear sight bases. The milling operation describe is required to recreate this void and allow the KNS sight to nest correctly in the mount.



In this photo, you can see how the ramped slope for the sight elevation barrel is mostly solid. There is absolutely nothing wrong with this, except that the KNS sight cannot fit correctly.



In this photo, a clearance cut can be seen where there is shiny/bare aluminum. This cut replicates the casting void present in a standard AK rear sight tower and allows the KNS sight to correctly nest in the mount.



Using the supplied print, consult a qualified machinist/gunsmith to have the modification performed. The operation does require the use of a vertical mill, but is not complex, any competent and well equipped machine shop should make short work of it.



In this photo, you can see a typical fixturing layout for this operation, the preferred cutting tool is a .250" diameter end mill suitable for aluminum.



Once the milling operation has been completed to print, the KNS sight may be installed in the same manner as any factory AK rear sight by compressing the spring and sliding the sight into the base.



The KOP iron sight adapter assembly may now be installed onto the KOP rear sight base per Sabrewerks' installation instructions.